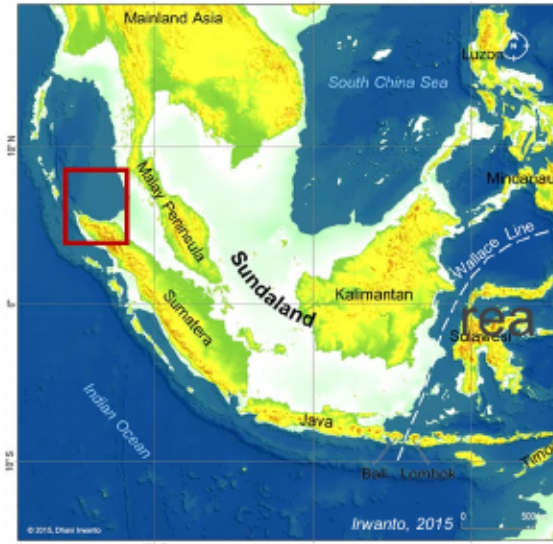


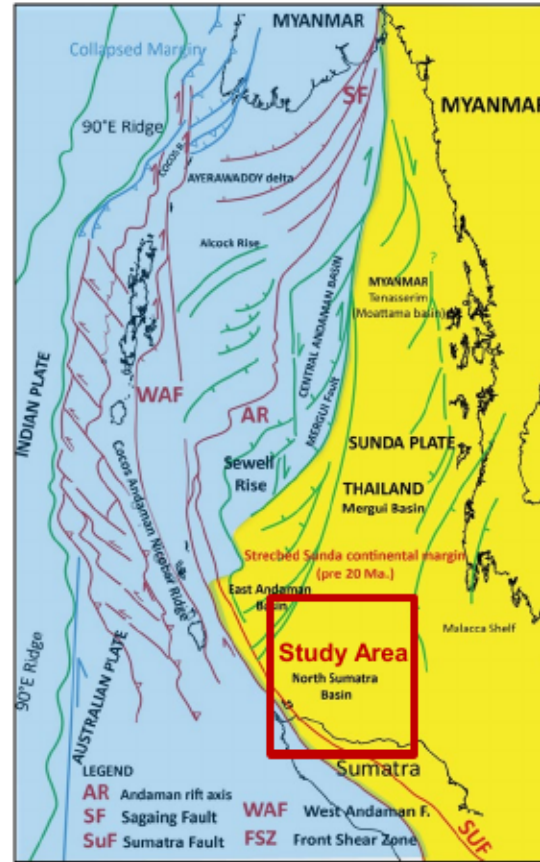
An Exploration Hotspot - North Sumatra Basin

Tad Choi

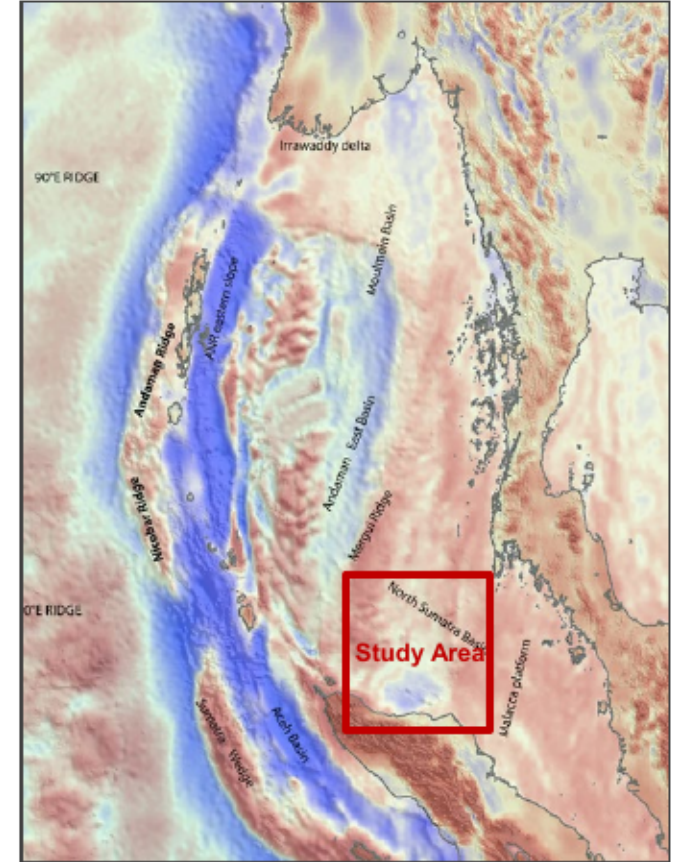
Location map - North Sumatra Basin



Study Area

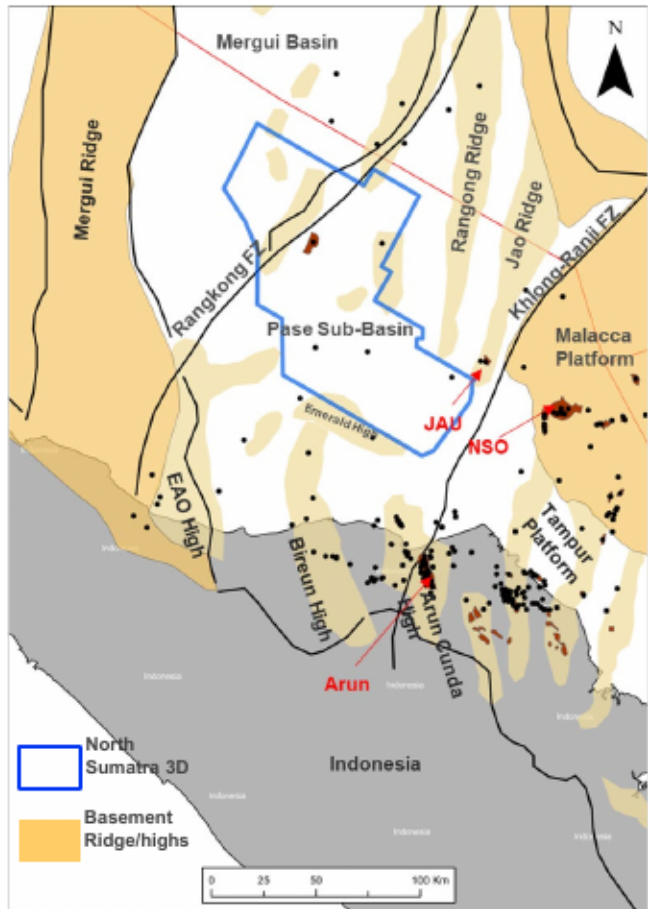


Exotic crust Sunda crust

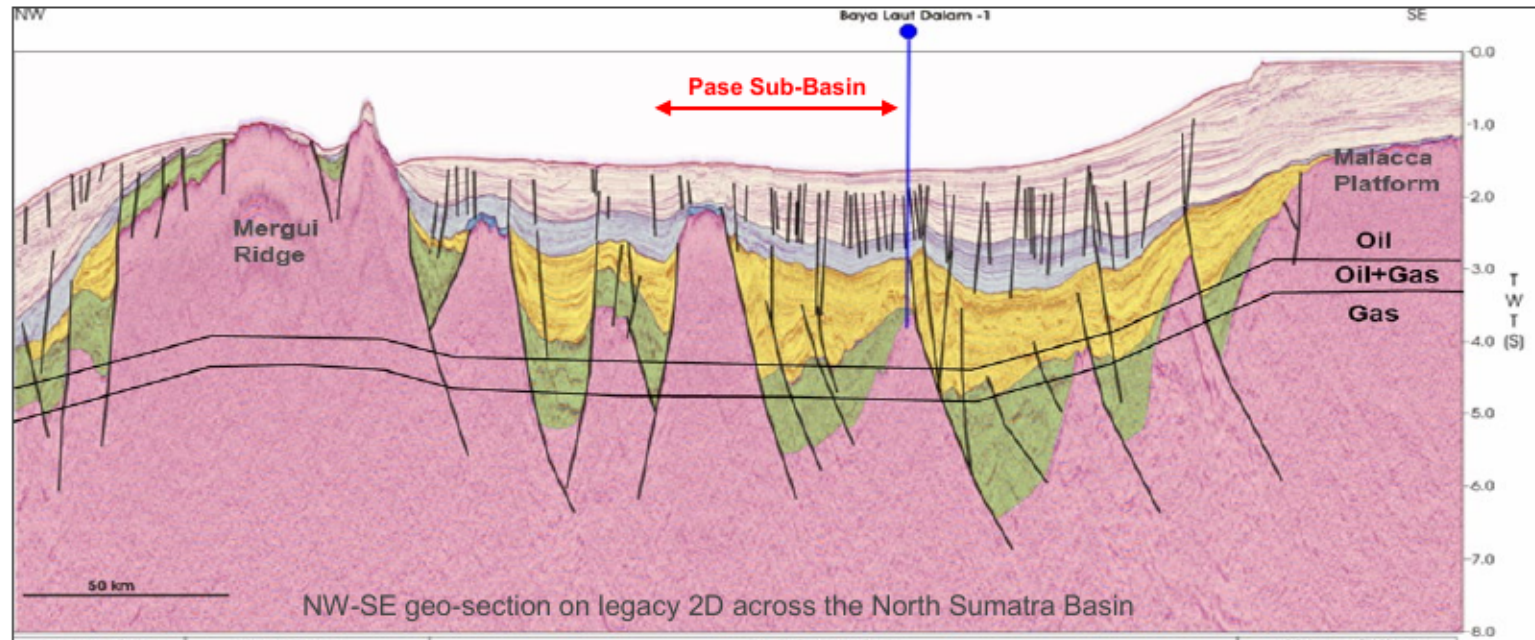
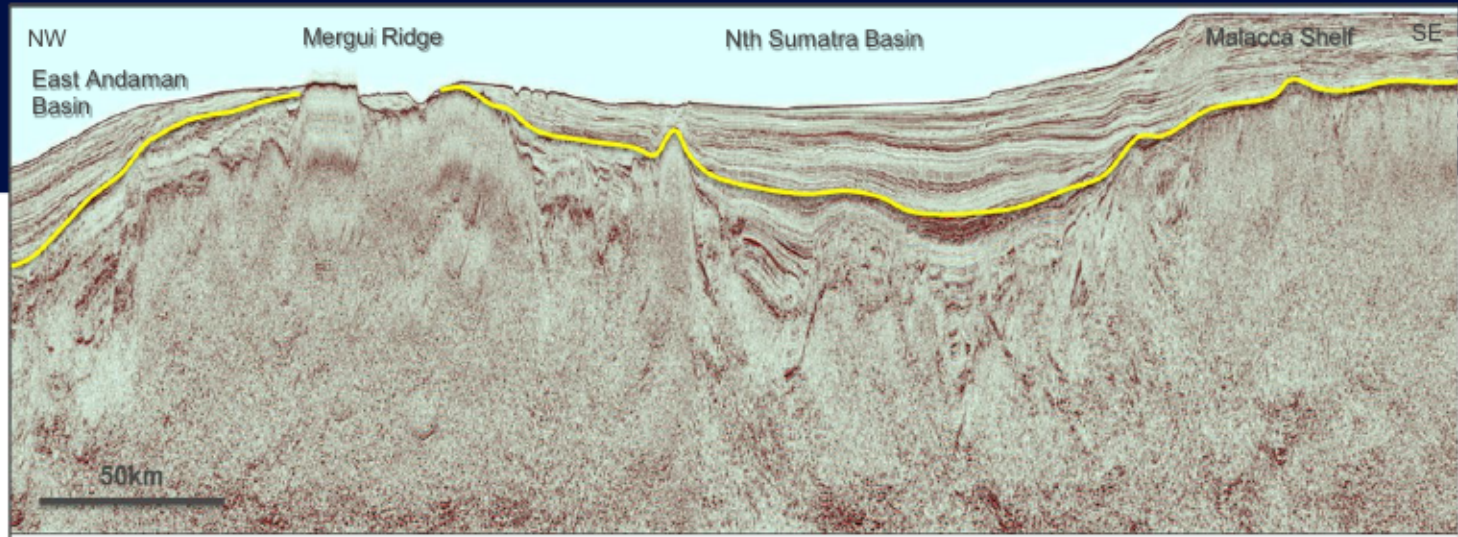


Free - air gravity map

North Sumatra Basin



Map of the Study area

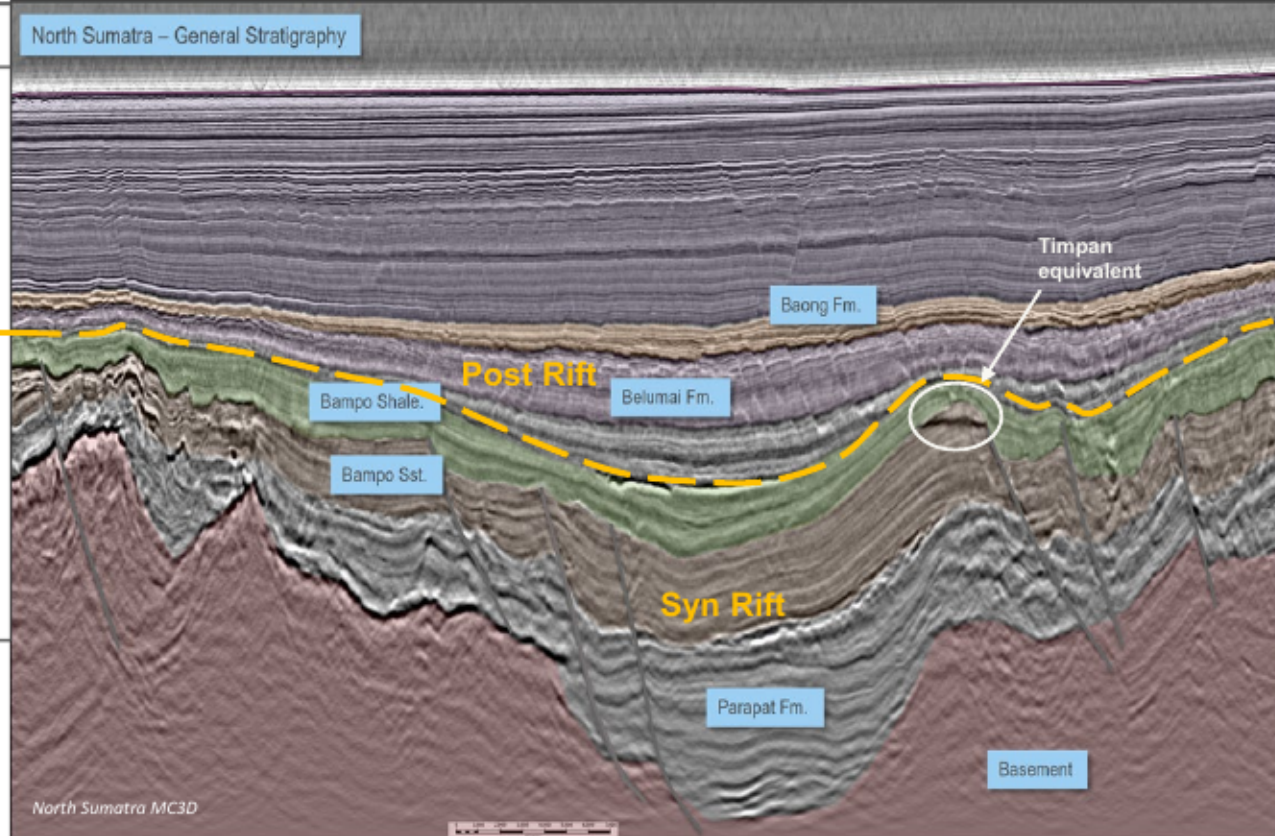
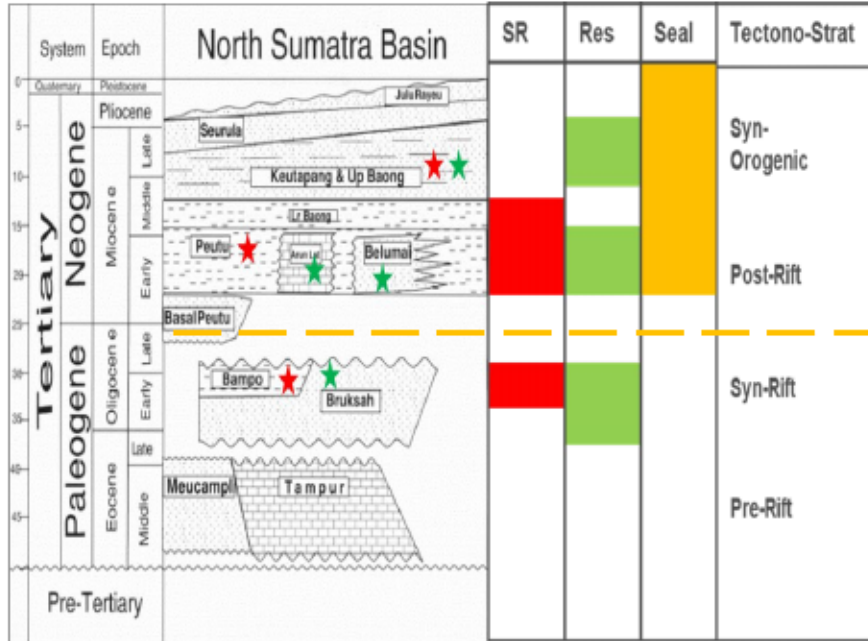


NW-SE geo-section on legacy 2D across the North Sumatra Basin



This file has been converted from its original format for security purposes. Please use CD5A17678EE64 as a reference.

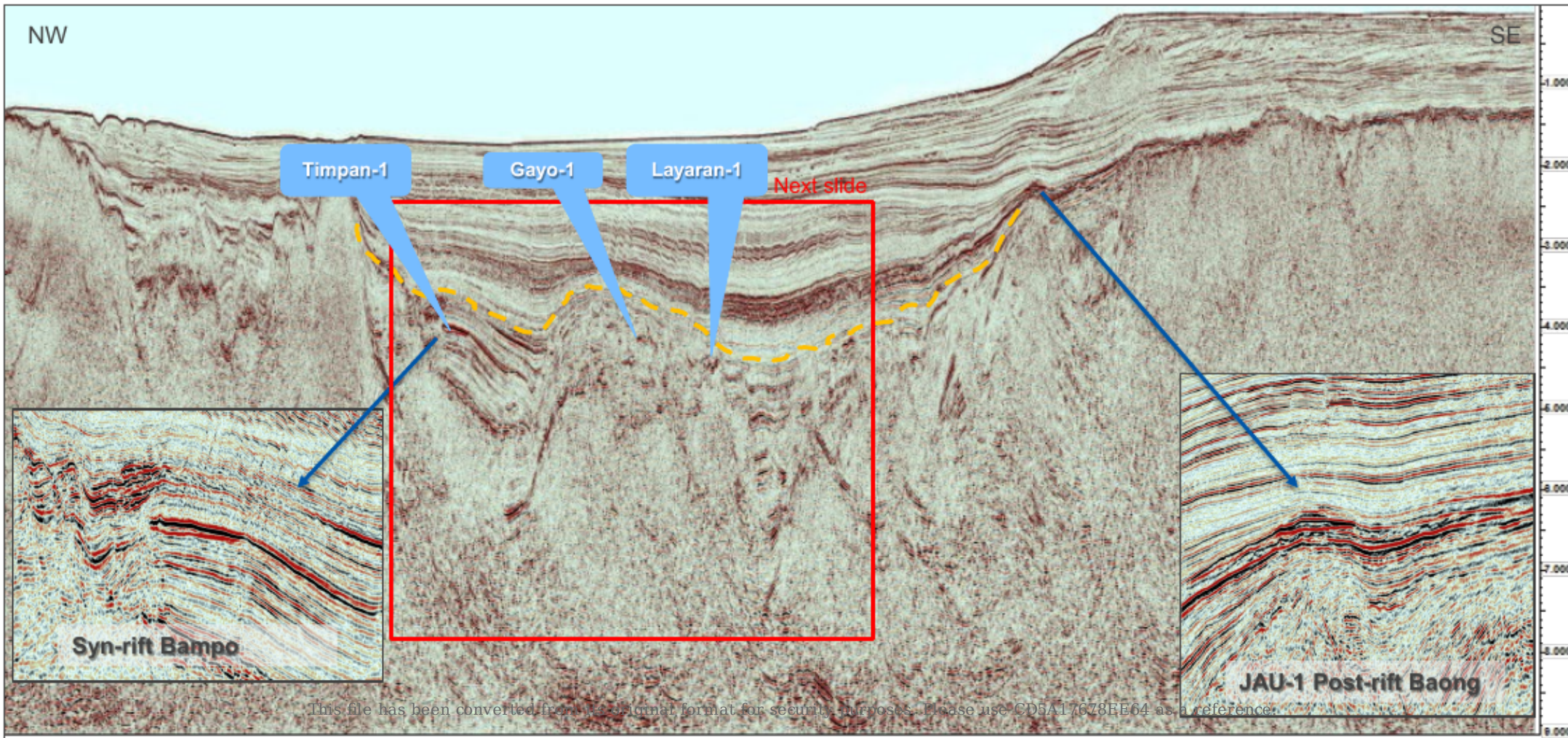
North Sumatra Basin | Stratigraphy



- The onshore part of the North Sumatra Basin has proven hydrocarbons in reservoirs of all ages and is considered mature.
- Carbonate build-ups are so far the primary exploration target onshore and offshore on the Tampur Platform.
- Both Syn-rift and Post-rift sediments are present in the deeper offshore. New 3D seismic has significantly improved the deeper imaging.

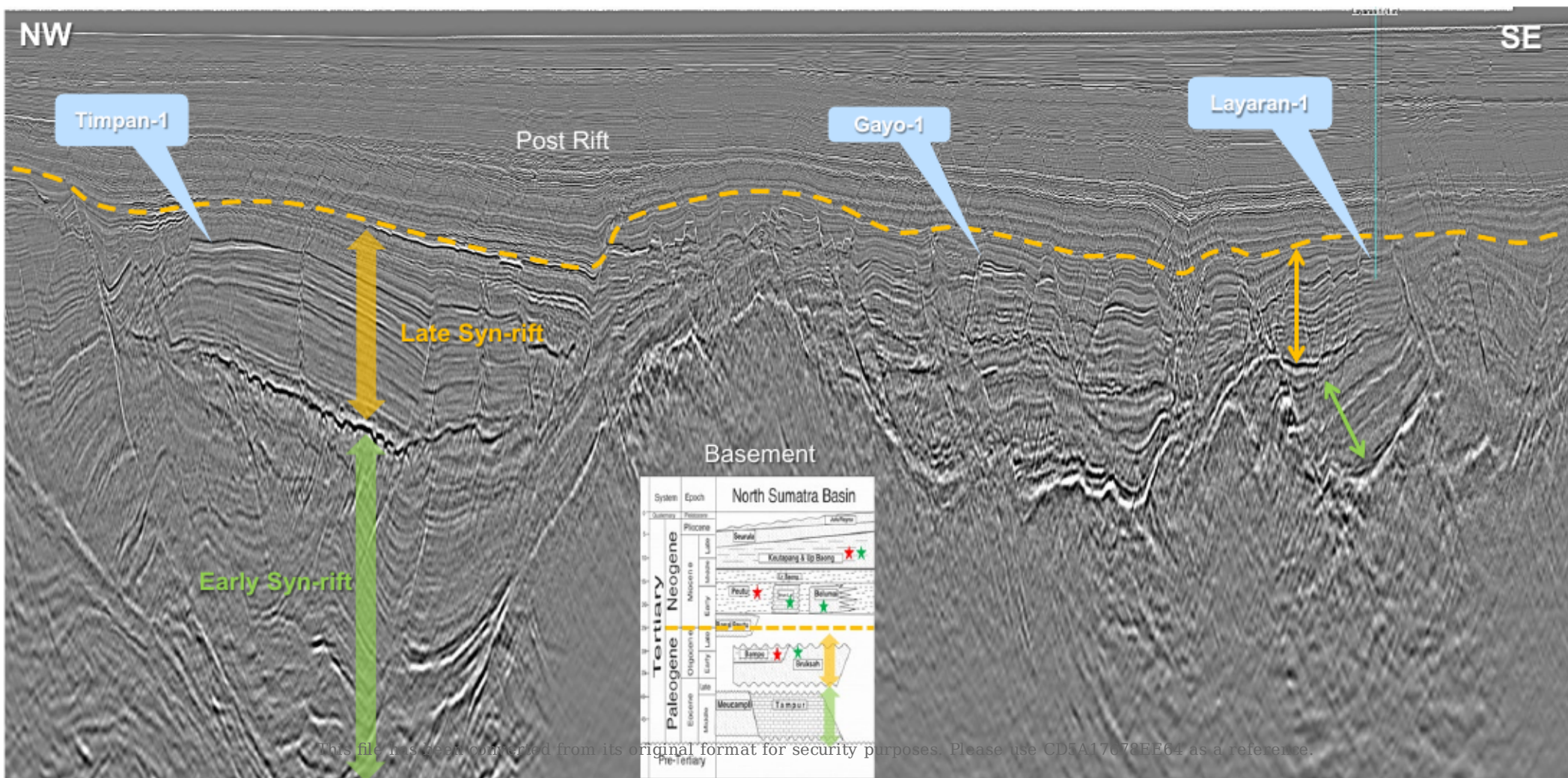
This file has been converted from its original format for security purposes. Please use CD5A17678EE64 as a reference.

North Sumatra legacy 2D - syn-rift and post-rift proven plays

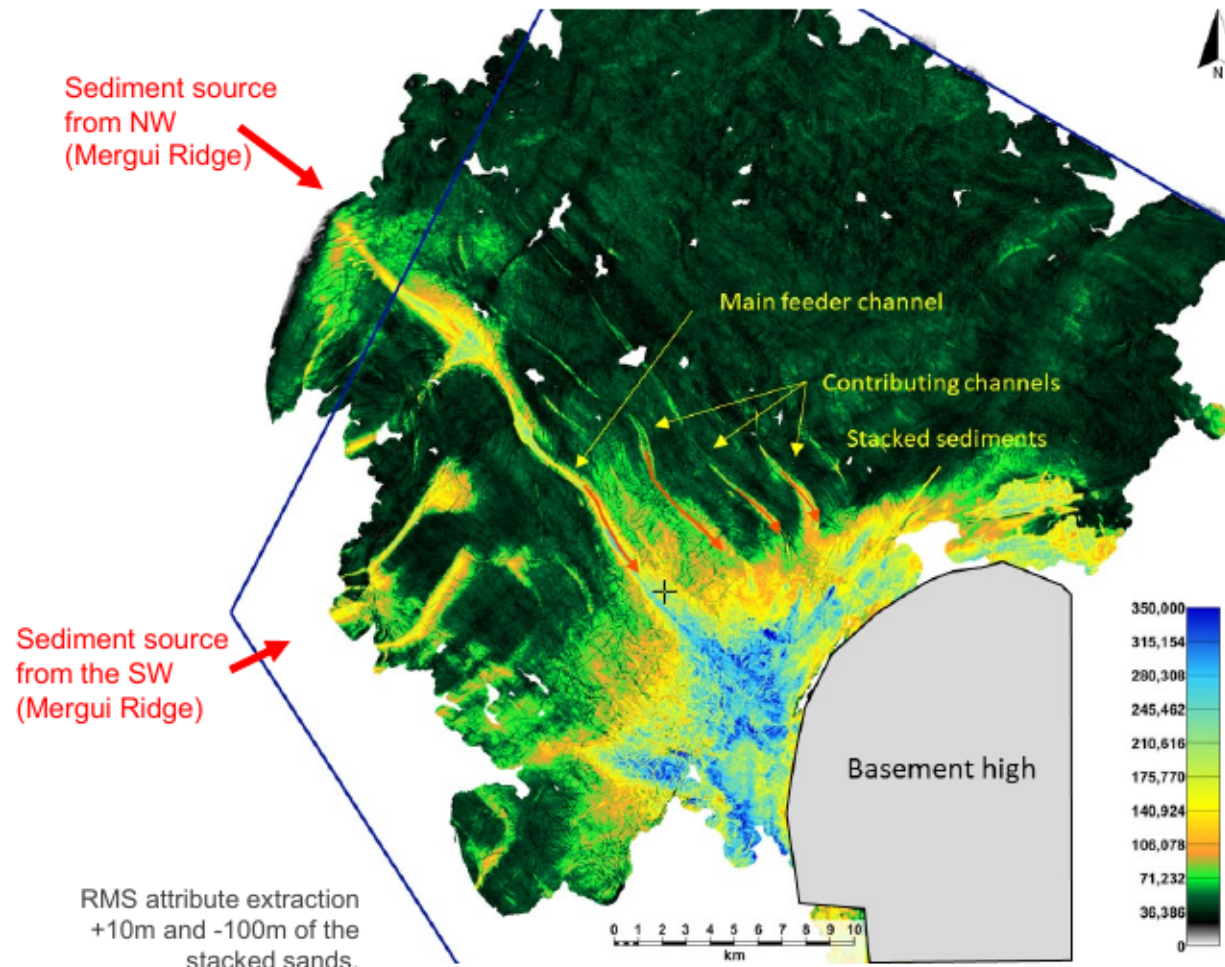
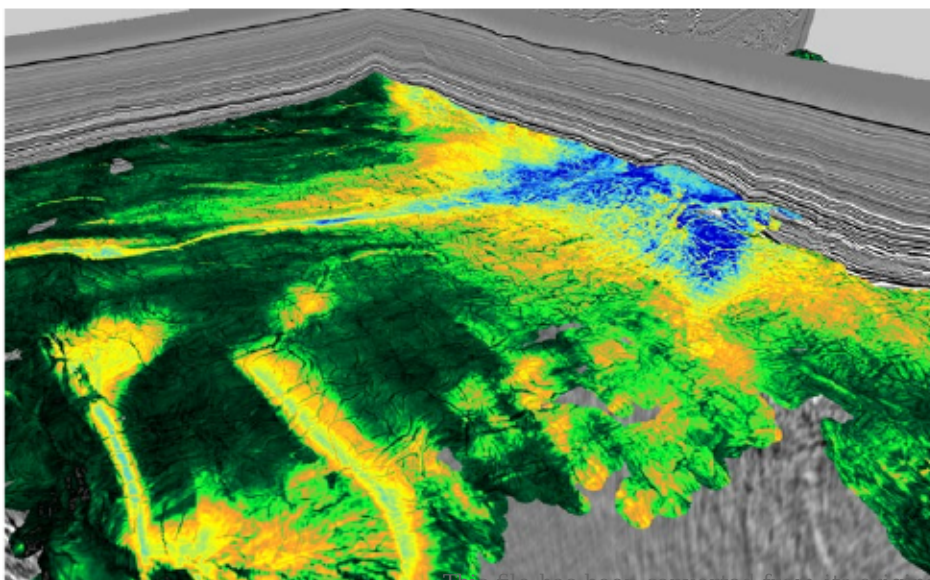
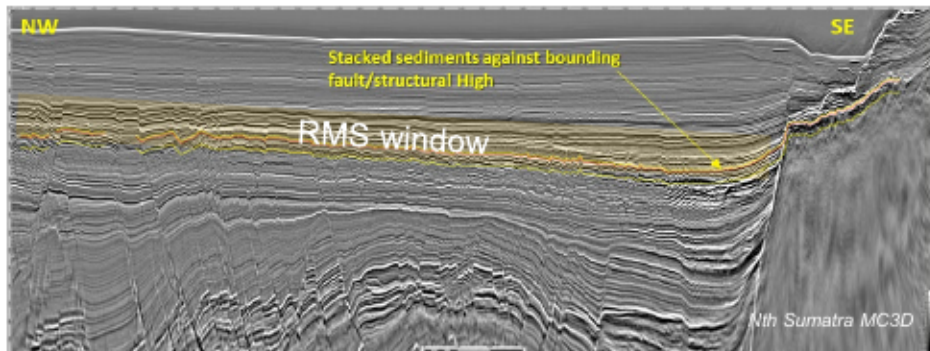


This file has been converted from its original format for security purposes. Please use CD5A176Z8EE64 as a reference.

North Sumatra MC3D recent syn-rift discoveries



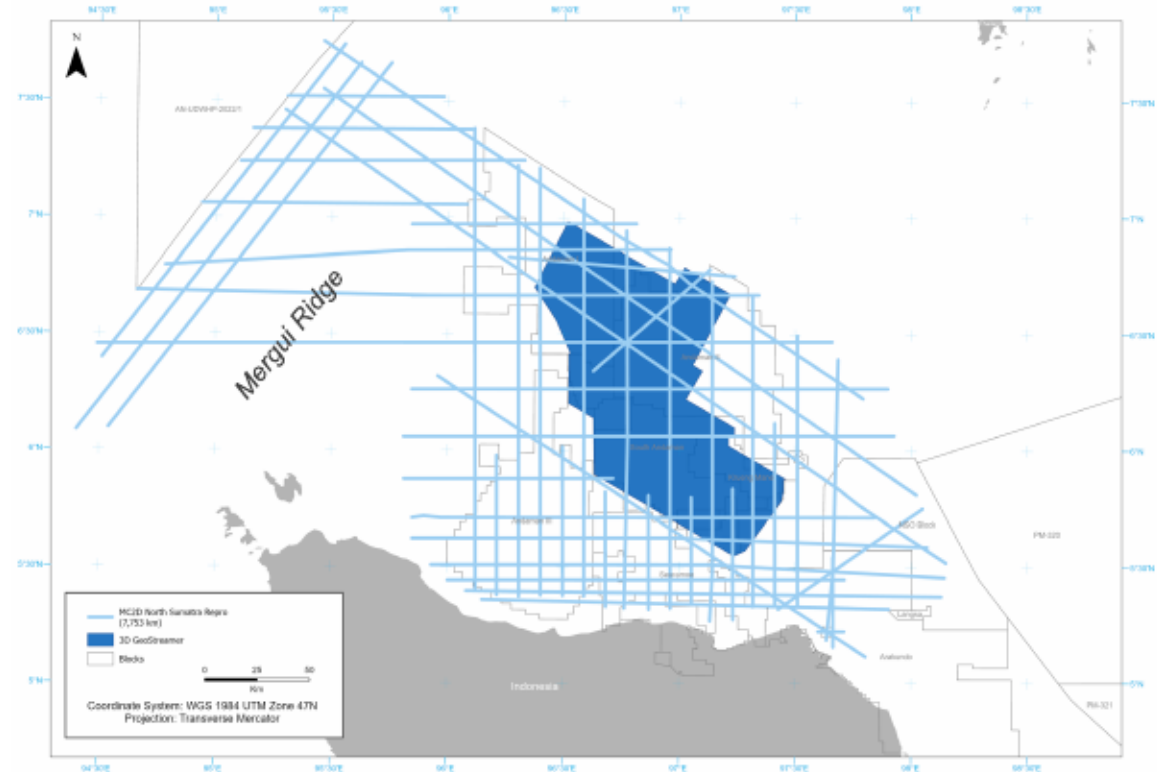
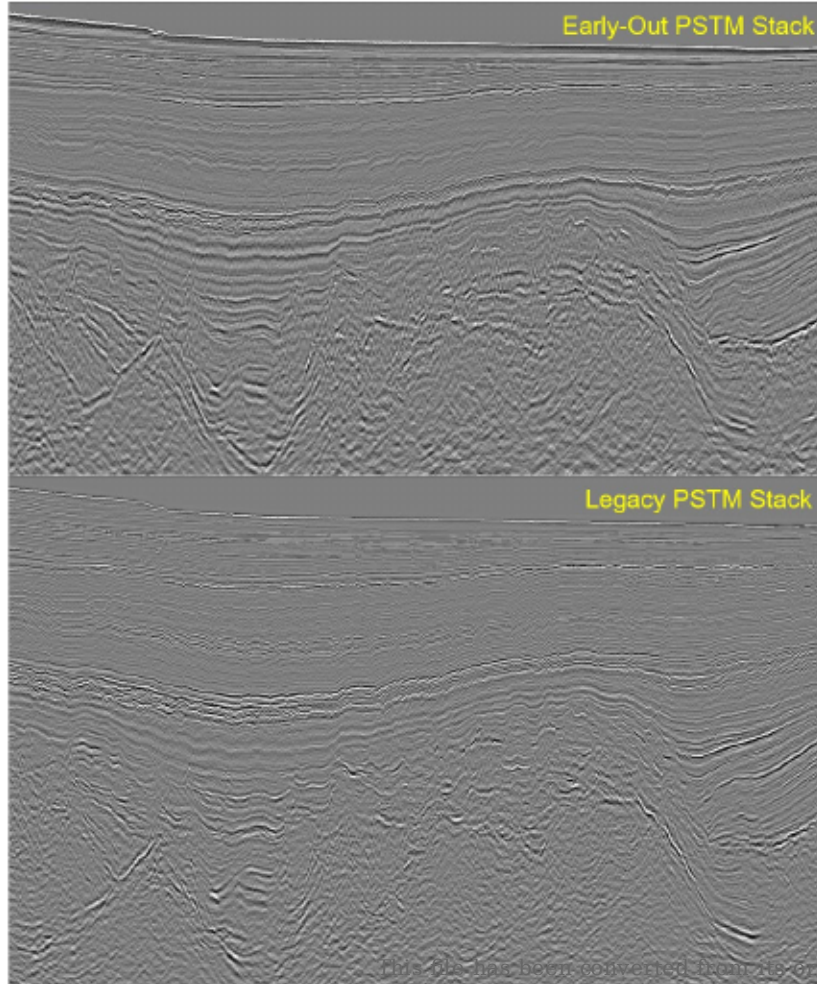
North Sumatra MC3D post-rift (Baong Fm) fans



RMS attribute extraction +10m and -100m of the stacked sands.

This file has been converted from its original format for security purposes. Please use CD5A17678EE64 as a reference.

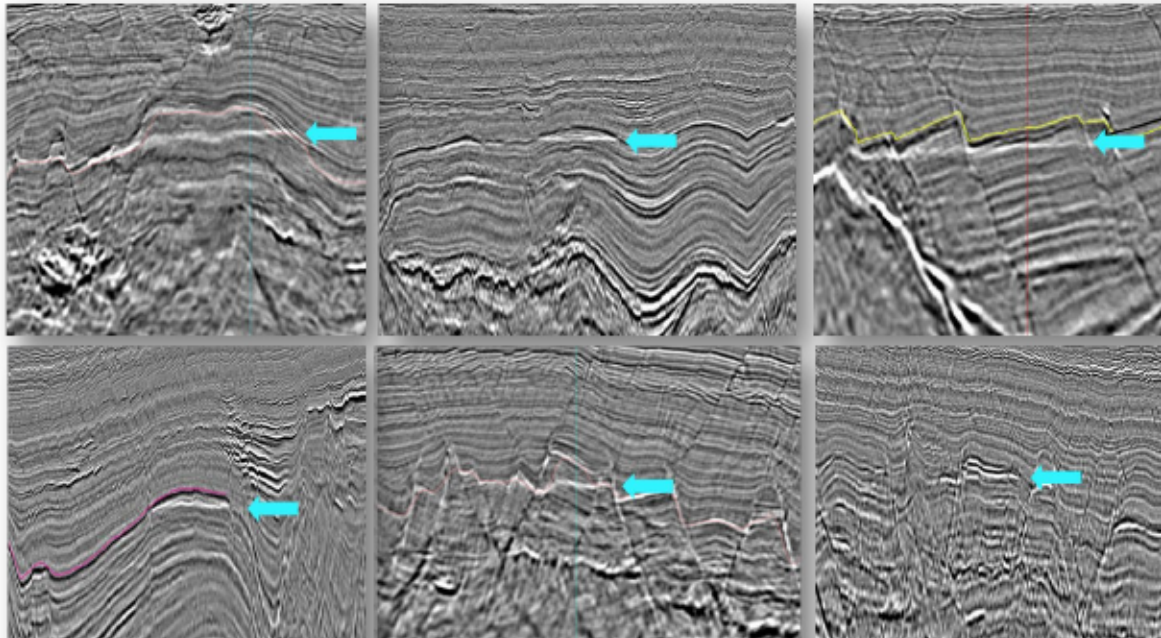
MC2D North Sumatra repro – regional evaluation



- North Sumatra MC2D repro data covers wider extent including and across the Mergui Ridge.
- It will help with regional understanding of the North Sumatra and Mergui basins.
- Comprehensive reprocessing sequence comprising PSTM and PSDM with FWI applied.

This file has been converted from its original format for display purposes. Please use CD5A17678EE64 as a reference.

Summary



- North Sumatra Basin is an exploration 'Hotspot' with recent large discoveries.
- North Sumatra MC3D data has enabled detailed investigation of the Pase sub-basin.
- Recent discoveries in the Bampo Fm are all structural closures with 'textbook' flatspots.
- Many more DHI supported prospects exist within the North Sumatra MC3D, which are due to be drilled soon.
- Post-rift Baong fans sourced from the Mergui Ridge deposit/onlap against basement highs. Potential for good reservoir.
- QI/AVO analyses on the data can further de-risk new/existing prospects.
- North Sumatra MC2D repro data covers wider extent. Together with the MC3D it will help with regional understanding of the greater North Sumatra Basin